



Life Affect

//School

In school, the rules and regulations of "exam oriented education" limit the active nature of boys, and long-term learning and growth in the rules that are more inclined to girls' learning and life will make boys confused and confused about their identity, and will subconsciously know more behaviors and habits of women.

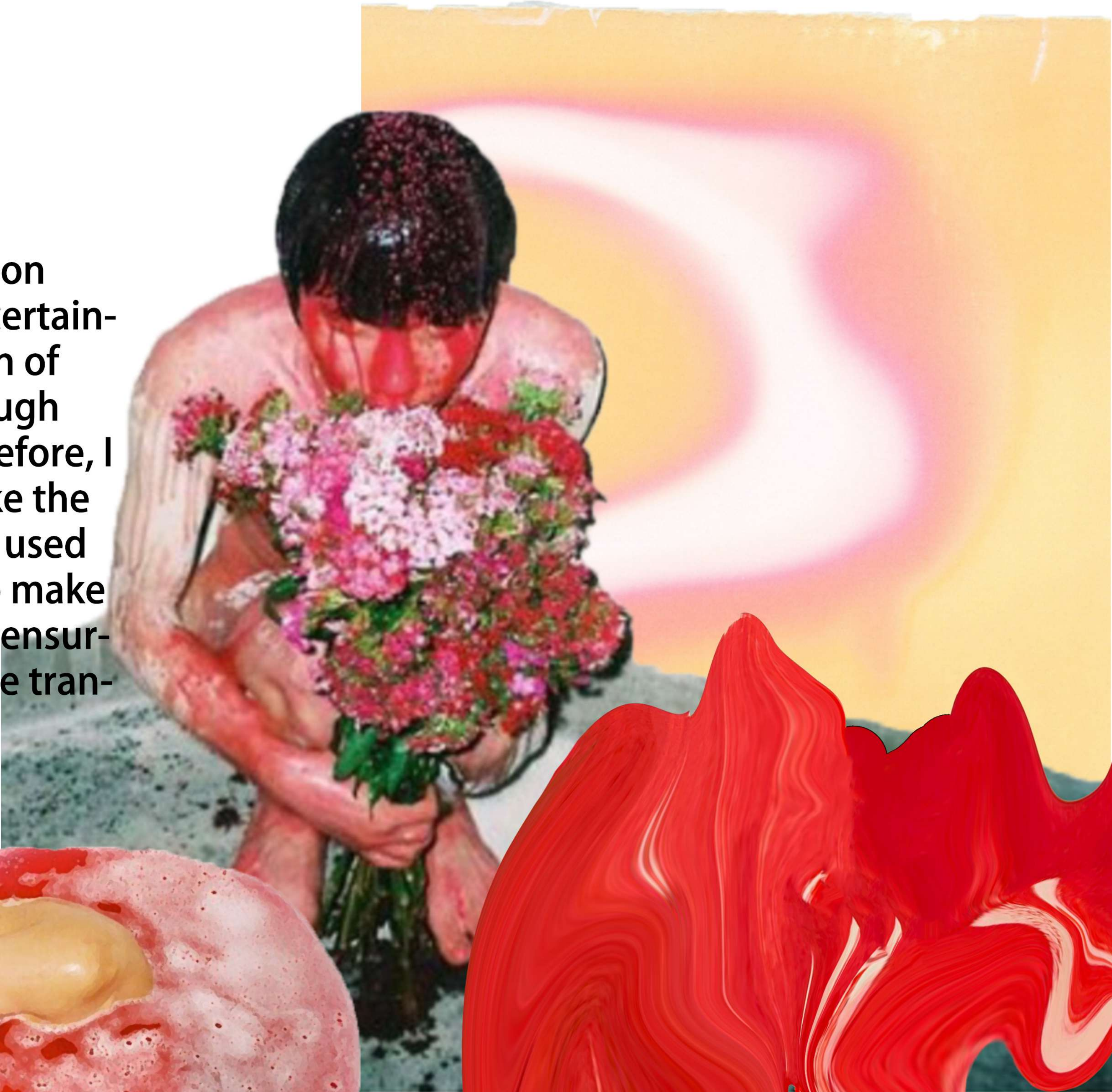
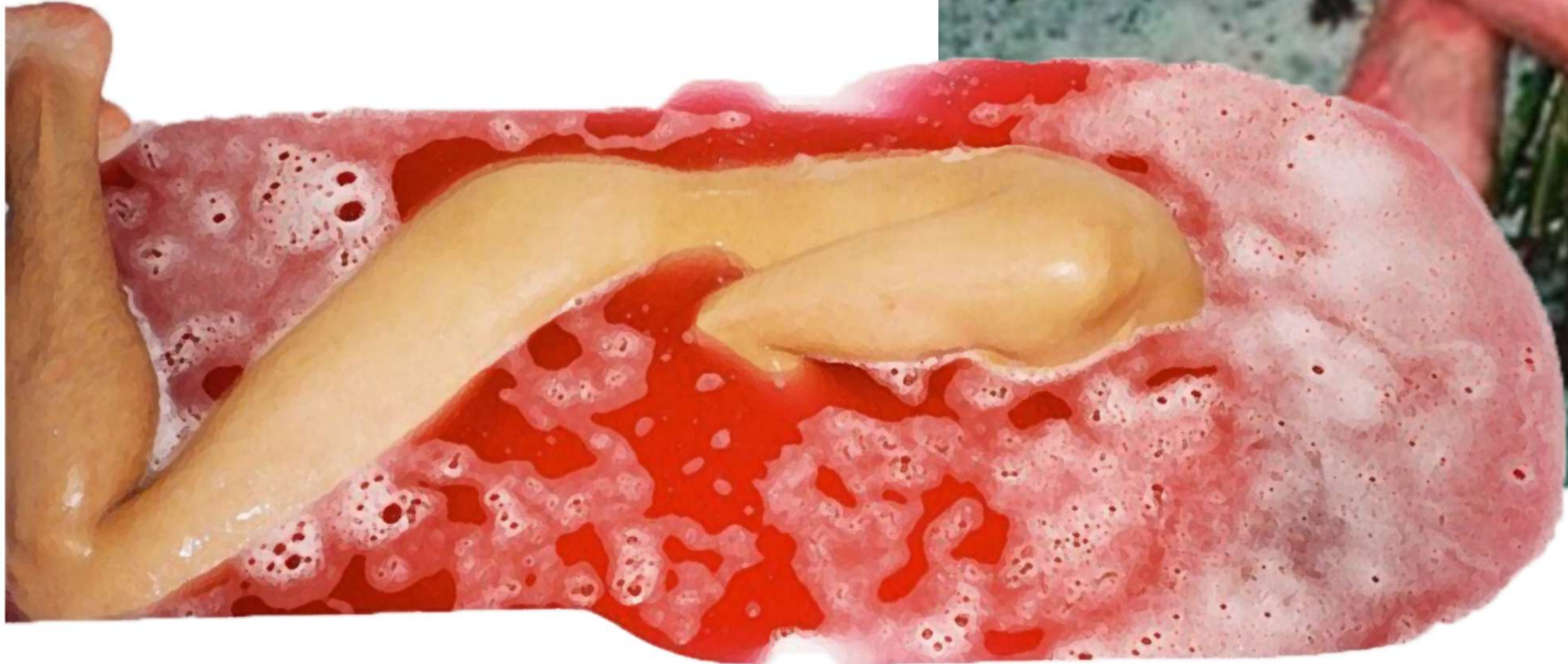
In terms of family, China has always been a family with patriarchal education, which is slowly replaced by the mother, followed by the doting and considerate protection of boys, and the "masculine" trait of boys gradually recedes in the process of boys growing up.

//Family

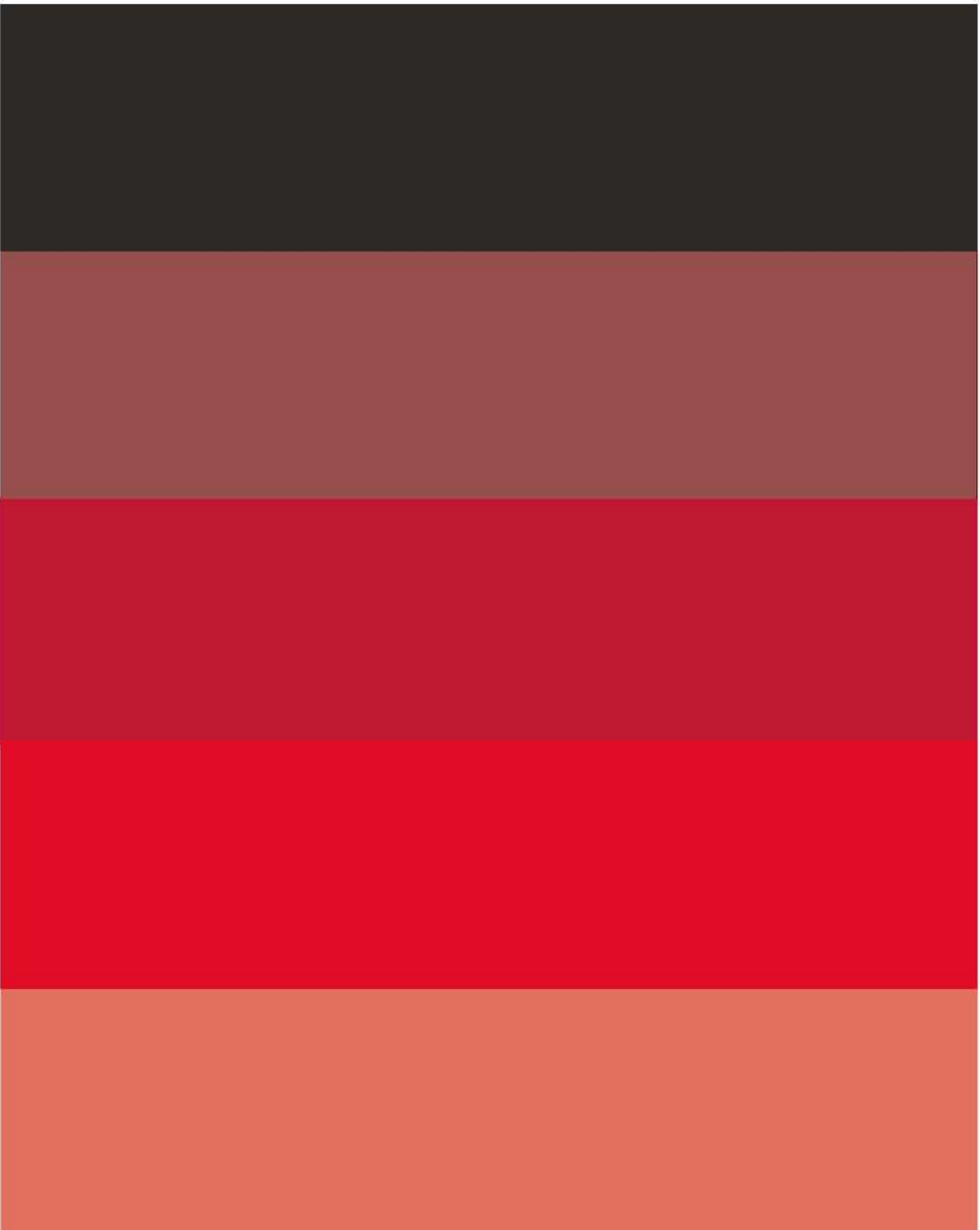
山不在高有仙則
名水不在深有龍
則靈斯是陋室惟
吾德馨苔痕上階
綠草色入簾青談

無琴之勞西云劉

It seems to me that this transition begins with a hidden inner uncertainty and ends with the expression of one's desires and feelings through appearance and clothing. Therefore, I chose a bright red color to make the overall effect look bright, and I used black and yellow as auxiliary to make the whole look beautiful while ensuring the color balance during the transition.



Color

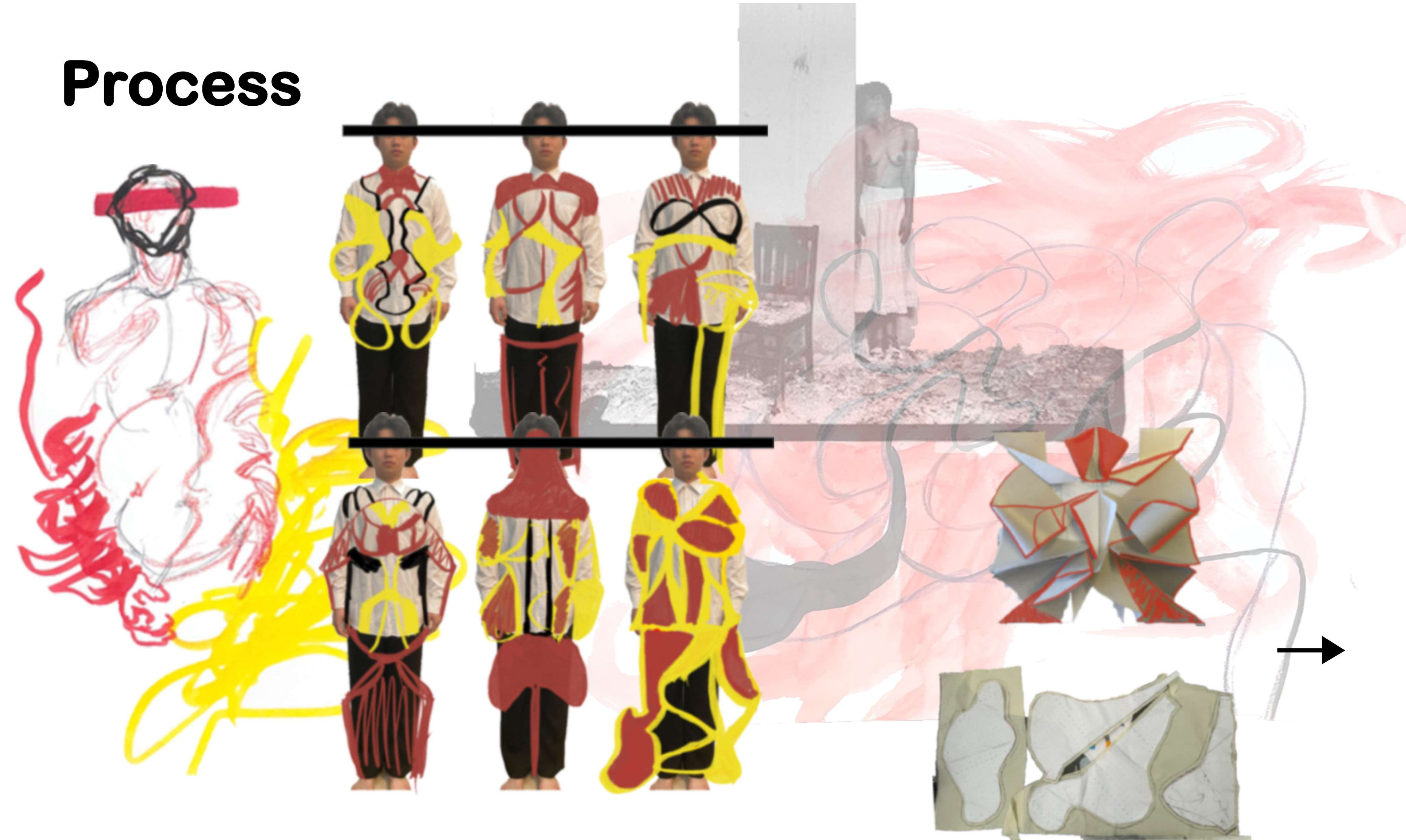




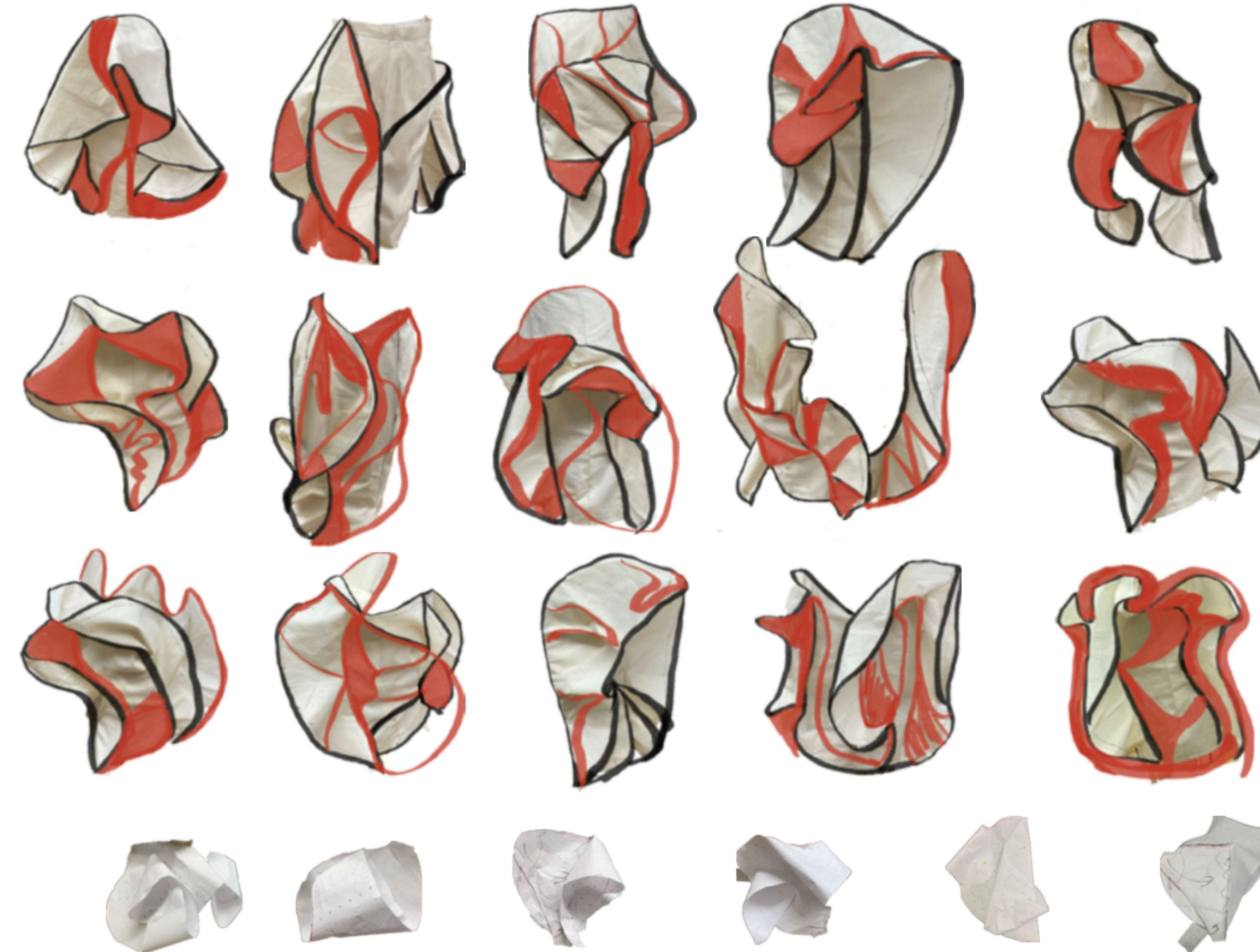
Texture

In terms of fabric texture, I hope to express their inner confusion and confusion. In terms of fabric transformation, I created three pieces of what I think they would look like to become a woman from my own perspective. In my opinion, the process of feminization is a blooming process. From curling up at the beginning and not daring to express their ideas, to slowly showing the female characteristics later, the overall texture effect has a distorted and spreading effect, which can not only represent the changing psychology of women, but also a change of conscious form.

Process



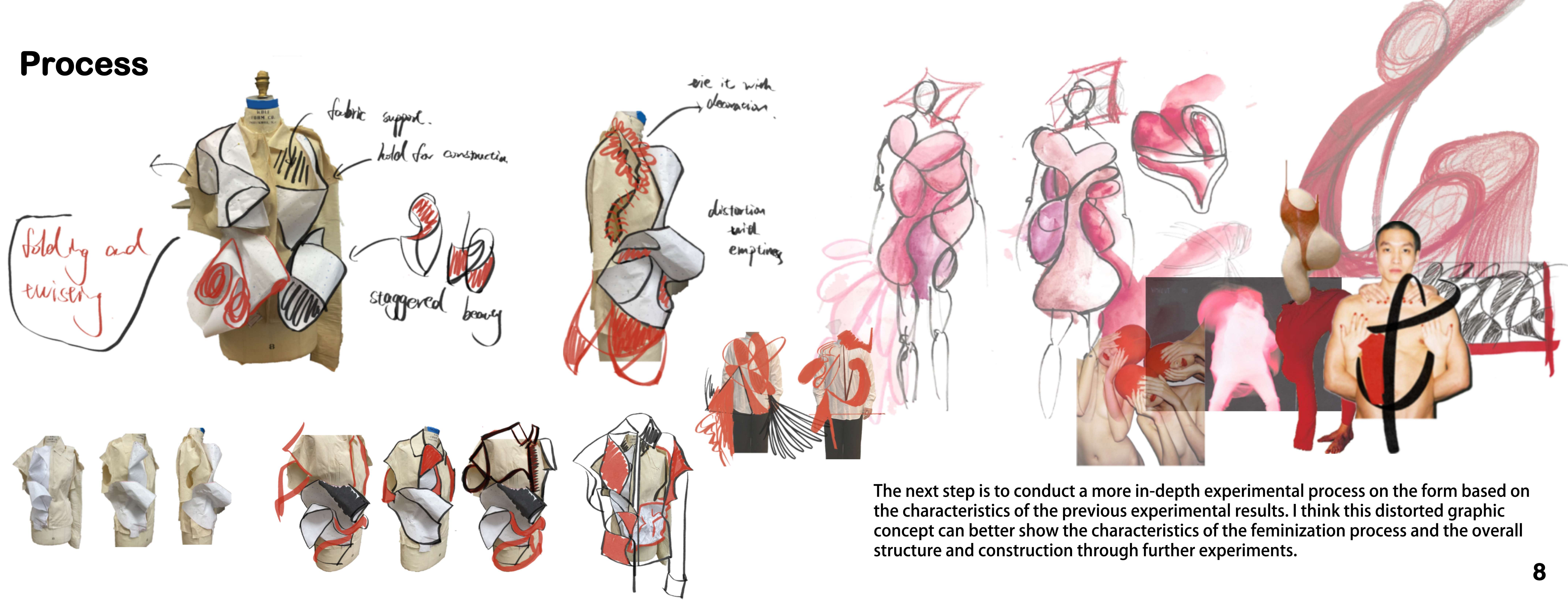
I use more lines, ellipses and other soft characteristics of the link together. It shows the heart that is trying to try a new identity, as well as an intuitive image change in the imagination. The beneath part is my attempt to design some very conceptual representation of the masculine and feminine process on my own.



Then, from the perspective of myself, a straight man, I conducted a series of experiments on profile and structure through folding, distortion and deformation. I hope that through these characteristics, I can show the inner activities and appearance characteristics of men in the change of feminization, and make follow-up design based on these characteristics.



Process

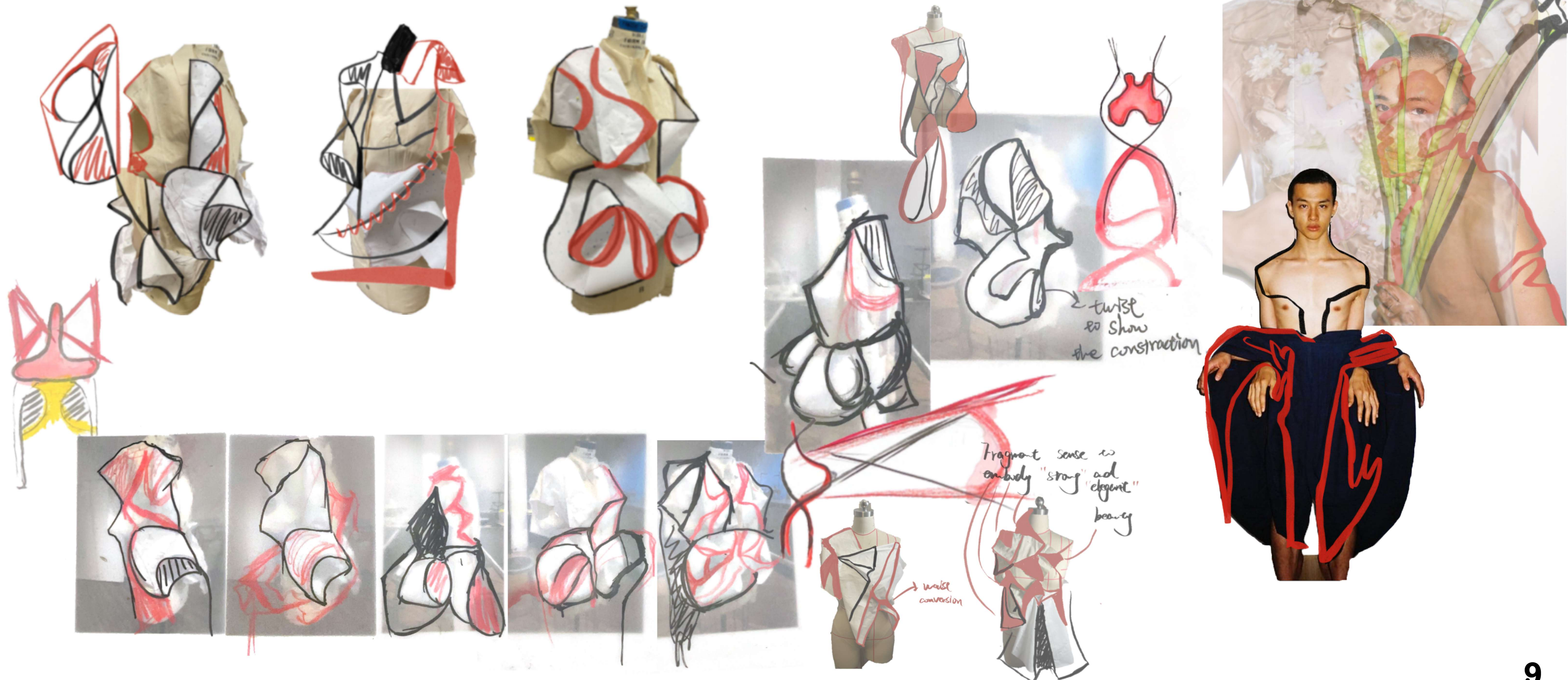


The next step is to conduct a more in-depth experimental process on the form based on the characteristics of the previous experimental results. I think this distorted graphic concept can better show the characteristics of the feminization process and the overall structure and construction through further experiments.



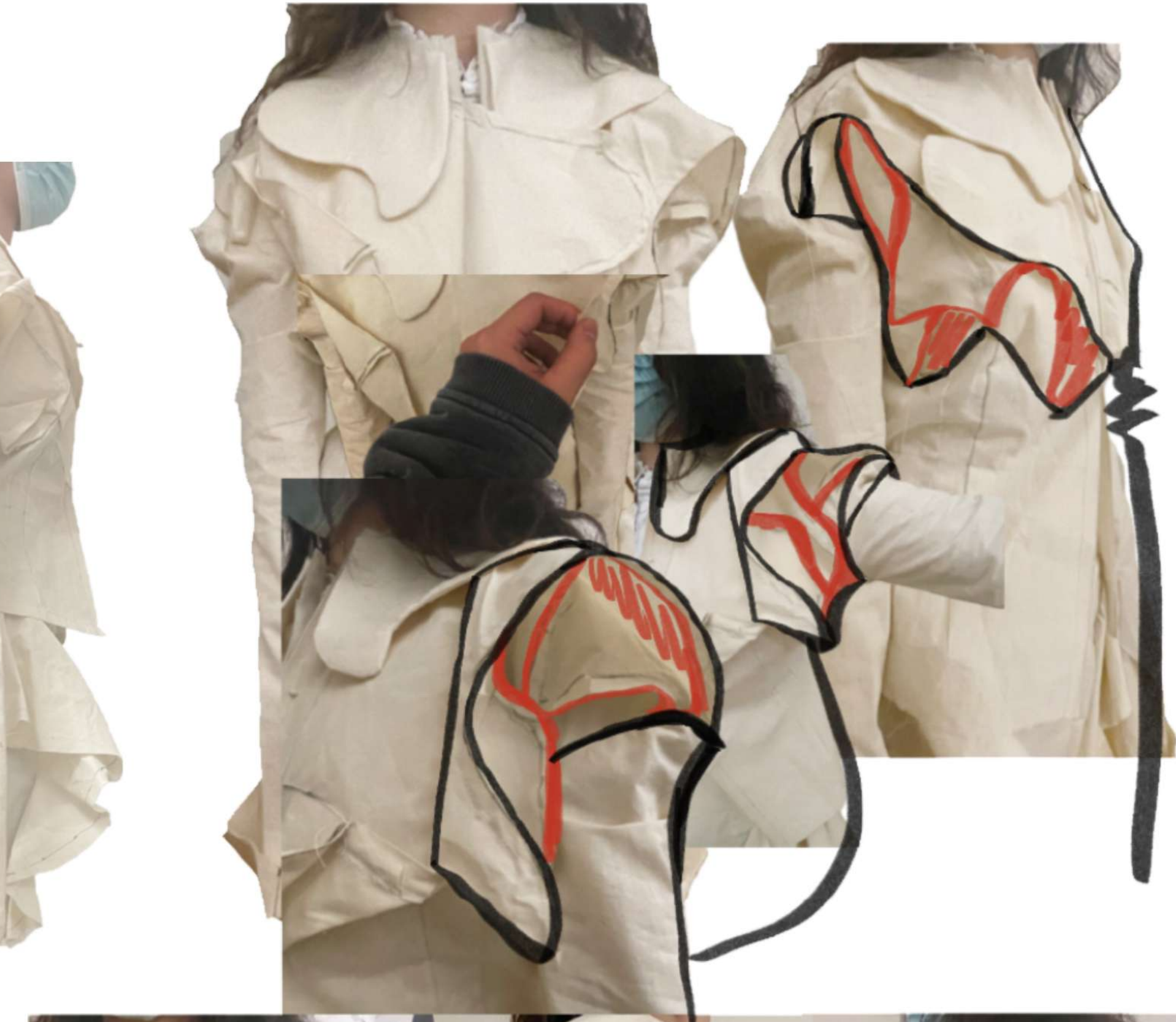
I think this is very positive. This part is more extension experiments, which makes more attempts to combine the curved line feeling with the three-dimensional distorted modeling. Through the basic modeling on the form, I hope to explore the maximum possibility of revealing changes.

Process

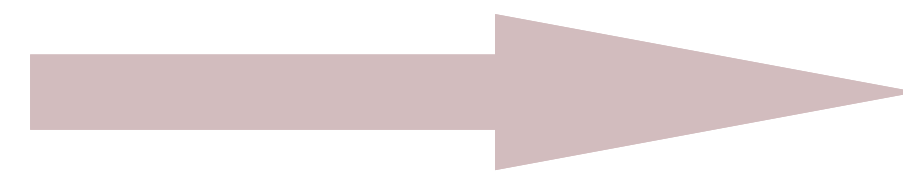
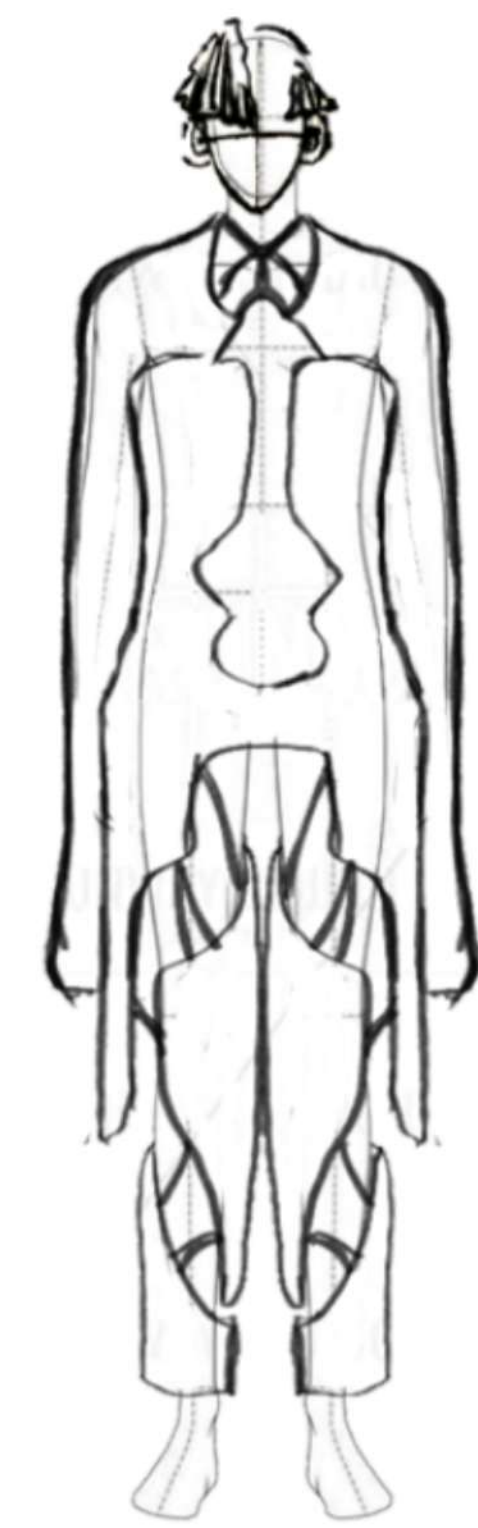




After a series of previous experiments, I made a dress to reveal the "concept". Combined with the characteristics of distortion and turning, I made a "conceptual" design attempt on muslin. I hope this "conceptual" dress can be better connected with the subsequent design and modeling composition.



Expression of Concept



Design Layout

In the part of design collection, I divided the twelve sets of design drafts into three parts, "what can be worn at present"; "Experimental clothing in the near future" and "concept clothing in the future" are four sets of clothes in each part. I hope to show my understanding and perception of more parts of male feminization in many aspects from the display of real wear to the expression of concept.



Final Looks

Feminization of Men

